

 osann



# Eno360



ECE 0+/1/2/3  
0-36 кг

RU

Eno360°.

- ( **0+ / 1 / 2 / 3** ) : 0 ECE 36
- : 0-12  
0+ : Isofix
- 1 : Top-Tether. 3- 0 13  
9 18 Isofix
- Isofix Top-Tether. 3- 18  
2 3 15 36 5- 5- Isofix
- 3- Isofix. 3-  
Isofix. ECE 0+
- Isofix 3- ECE R16

ECE				Isofix
0+		Isofix + Top-Tether	-	D
0+		3-		-
1		Isofix + Top-Tether	-	D
1		Isofix + Top-Tether	Isofix	B1
1		3-		-
2 / 3		3-		-
2 / 3		3- +	-	-

E

• « »  
N°44/04, ( )

• « »

• « »

• 3- N° 16

• 44/04 » «

• 3- 3- N° 16

ISOFIX ( 0+/1)

ISOFIX.  
44/04

• ( ISOFIX. ISOFIX )

• ISOFIX. 1, D & B1 0+, D,

•

•

•

•

5 -

18 ( 0+ 1)  
5- ( 2/3)

Isofix

•

•

•

•

•

•

•

•

•

•

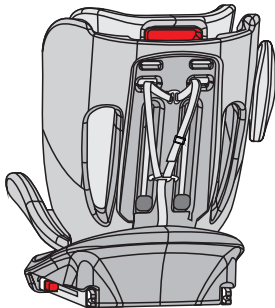
•

36

•

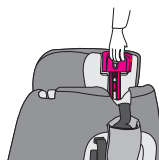
•

Isofix:



•

•



the study. The mean age of the participants was 68.1 years (SD = 5.9), with a range of 56–84 years. The majority of participants were female (80.3%), and the majority were married (70.7%). The majority of participants were retired (79.7%), and the majority were living with family (75.3%). The majority of participants were living in the city (69.3%), and the majority were living in a house (75.3%). The majority of participants were living in a house (75.3%), and the majority were living in a house (75.3%).

The majority of participants were living in a house (75.3%), and the majority were living in a house (75.3%). The majority of participants were living in a house (75.3%), and the majority were living in a house (75.3%). The majority of participants were living in a house (75.3%), and the majority were living in a house (75.3%). The majority of participants were living in a house (75.3%), and the majority were living in a house (75.3%). The majority of participants were living in a house (75.3%), and the majority were living in a house (75.3%).

The majority of participants were living in a house (75.3%), and the majority were living in a house (75.3%). The majority of participants were living in a house (75.3%), and the majority were living in a house (75.3%). The majority of participants were living in a house (75.3%), and the majority were living in a house (75.3%). The majority of participants were living in a house (75.3%), and the majority were living in a house (75.3%). The majority of participants were living in a house (75.3%), and the majority were living in a house (75.3%).

The majority of participants were living in a house (75.3%), and the majority were living in a house (75.3%). The majority of participants were living in a house (75.3%), and the majority were living in a house (75.3%). The majority of participants were living in a house (75.3%), and the majority were living in a house (75.3%). The majority of participants were living in a house (75.3%), and the majority were living in a house (75.3%). The majority of participants were living in a house (75.3%), and the majority were living in a house (75.3%).

The majority of participants were living in a house (75.3%), and the majority were living in a house (75.3%). The majority of participants were living in a house (75.3%), and the majority were living in a house (75.3%). The majority of participants were living in a house (75.3%), and the majority were living in a house (75.3%). The majority of participants were living in a house (75.3%), and the majority were living in a house (75.3%). The majority of participants were living in a house (75.3%), and the majority were living in a house (75.3%).

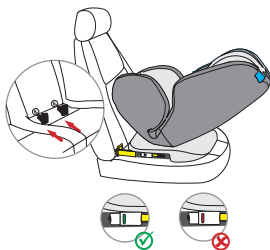


### Isofix

Isofix.

Isofix

Isofix

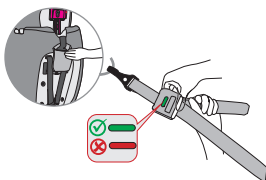


### Top-Tether

Top-Tether

Top-Tether,

Top-Tether,



0+ / 1 ( 0-18 )

- 1 • Isofix
- Isofix
- Isofix,

- 2 • Top-Tether
- Top-Tether,

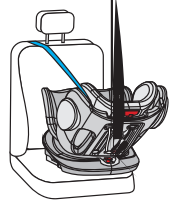
• Top-Tether

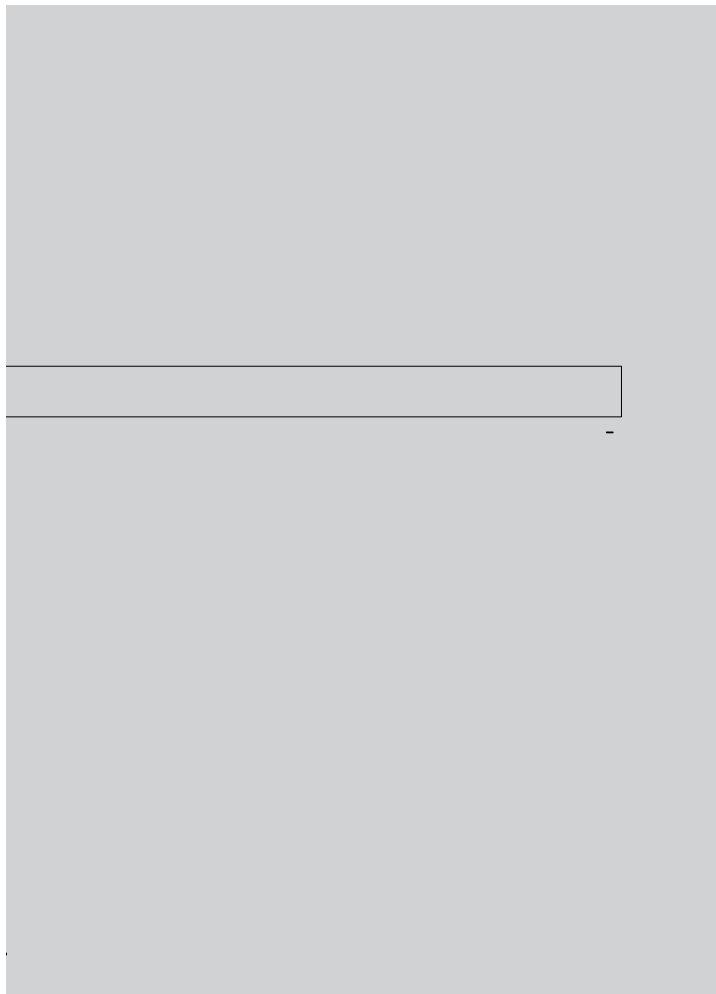
• Top Tether,

- 3 • Isofix,
- 3-

- 
- 
- 
- 
- 
- 
- 

• 3-  
 • + ( 0 - 13 )





3

•

•

•

•

•



: 3-

1

•

•

3-

3

•

•

•

•

•

2

•

•

•

•

•

•



2 / 3

( 15-36 )

1

• 5-

< >

2

•

•

•

•

•

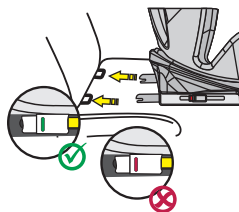
2/3

Isofix  
Isofix  
Isofix

Isofix

Isofix

Isofix



Isofix.

3

•

•

•

•

•

3-

3-

•

3-



P

( . . ) .



30°C,



« » 125080, . . . .12, .2,  
. +7 (495) 648-64-24 www.edmgroup.ru

OSANN «ENO 360» ( 0+/1/2/3 0 36 )

: «Jiangsu Swift Baby Product Technology Co.,Ltd.»/ «

: Xingyan Road, Xingdong Town Industrial Zone, Xinghua City Jiangsu

Province, P.R. China

« » 125080, . . . .12, .2,  
. +7 (495) 648-64-24 www.edmgroup.ru

018/2011 «

» OSANN

75%

Find us on Facebook and Instagram



[www.facebook.com/Osann.de](http://www.facebook.com/Osann.de)



[www.instagram.com/osann\\_kids](http://www.instagram.com/osann_kids)



osann

Osann GmbH  
Gewerbestr. 22  
D-78244 Gottmadingen

Tel.: +49 (0)7731 / 97 00 77  
Fax: +49 (0)7731 / 97 00 55

E-Mail: [info@osann.de](mailto:info@osann.de)  
Web: [www.osann.de](http://www.osann.de)

Version B | 09.09.2020

EAC